

Lab

[eftpos Chip overview](#)

[eftpos standards](#)

[Specifications](#)

[Manuals, guides, checklists and presentations](#)

[Procedures and forms](#)

eftpos CB Certification services

eftpos[®]

Version No	Status	Date issued
1.1	Final	16 October 2013

Copyright, confidentiality and disclaimer

Copyright in this document belongs to eftpos Payments Australia Limited ABN 37 136 180 366 (**eftpos**)

This document contains the latest information available at the time of publication. However, eftpos reserves the right to modify the information described herein at any time, with or without published notification. eftpos does not warrant the accuracy of the information contained in this document and eftpos has no liability for any reliance by any party on the information contained in this document or for any direct or indirect, special, consequential losses or punitive damages under any cause of action, whether in contract, tort, under indemnity or statute (including for loss of data, loss of reputation, loss of business opportunity or loss of anticipated savings) in connection with this document.

All information contained herein is confidential and proprietary to eftpos. No part of this document may be reproduced or transmitted in any form or by any means, electronic or mechanical, including photocopying, recording or information retrieval systems, except where expressly permitted by eftpos.

Written and published in Sydney, Australia by eftpos

©2013 eftpos Payments Australia Limited

All Rights Reserved.

eftpos CB Certification services

eftpos CB overview

In order to ensure all deployed eftpos Chip and Contactless products are compliant with the eftpos Rules and Specifications, eftpos has established a Certification Body (CB) to test and certify these products.

The eftpos CB uses an accredited laboratory to test eftpos Chip and Contactless products and will grant certification at the end of the test session, providing the product displays sufficient evidence of conformance to the eftpos Chip and Contactless specifications.

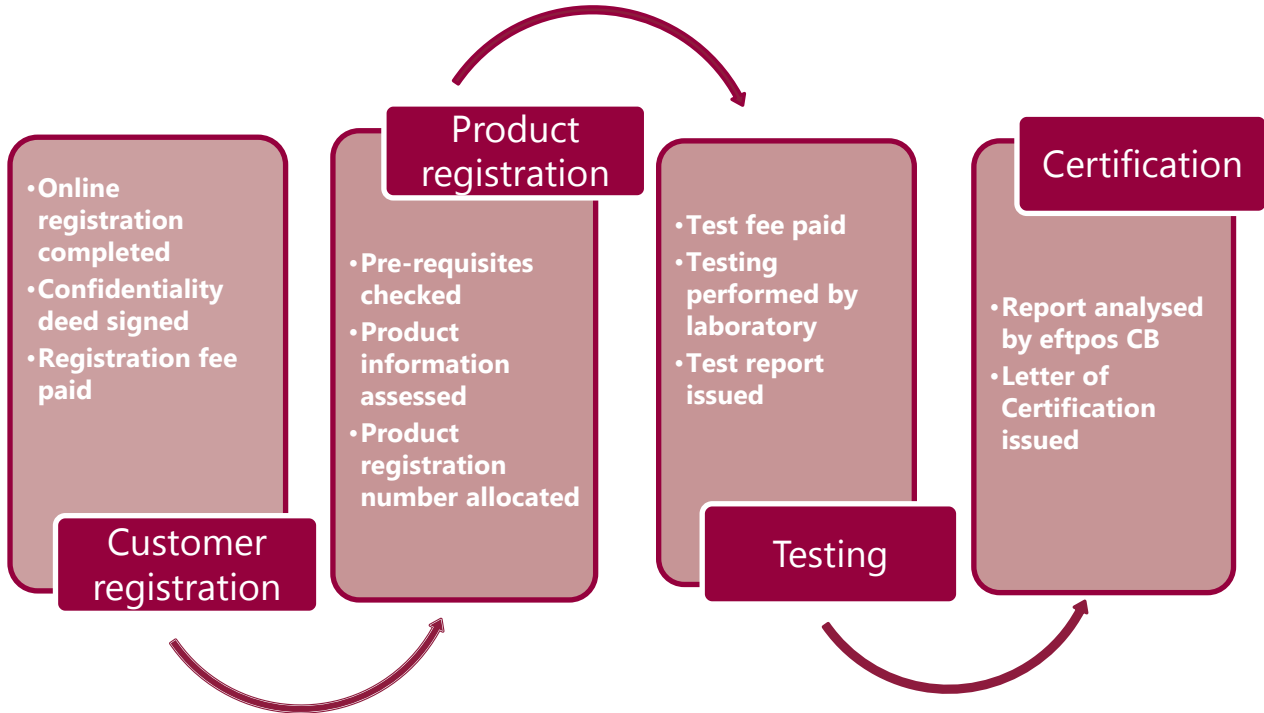
eftpos CB provides the following certifications:

- Card Functional (eCB CFC) for Contact, Contactless and Dual Interface cards. This is obtained by card or chip manufacturers.
- Card Type (eCB CTC) for Contact, Contactless and Dual Interface cards. This is obtained by card or chip manufacturers
- Contactless Card Type (eCB CCTC) for Contactless and Dual Interface cards. This is obtained by card manufacturers or Personalisation bureaux
- Card Personalisation certification (eCB CPC) for Contact, Contactless and Dual Interface cards. This is obtained by Issuers.
- Contactless Reader Functional (eCB CRC) for Contactless readers and Dual Interface devices. This is obtained by Terminal vendors.
- Terminal Application Validation (eCB TAV and eCB CTAV) for Contact, Contactless and Dual Interface devices. This is obtained by Acquirers.

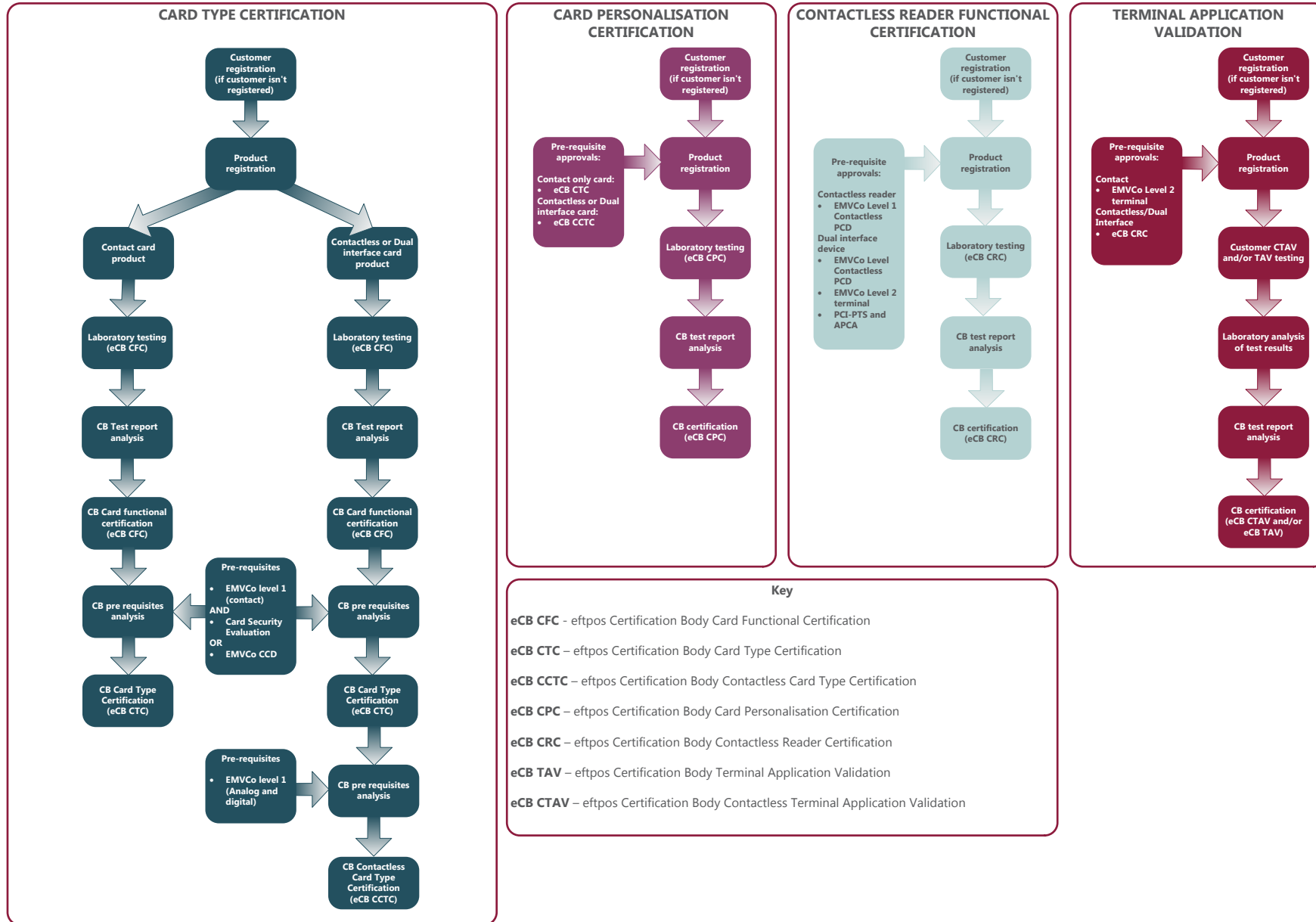
For more information about the eftpos CB services or details on eftpos Chip and Contactless certified card and terminal products please email:

certifications@eftposaustralia.com.au

eftpos CB process



eftpos CB certification overview



eftpos CB procedures and certifications

Certification/process	Description	Pre-requisites approvals/certifications	Document bundle	Obtained by:
eftpos CB Customer registration	Customer registration is a once only process and all customers need to be registered prior to registering products for testing/certification.	N/A	<ul style="list-style-type: none"> eCB Customer reg procedure Member OR Service provider eCB Confidentiality Deed eCB Rate card 	All eftpos CB customers (Issuers, Acquirers, Personalisation Bureaux, Card/Chip manufacturers, Terminal Vendors)
Cards				
eftpos CB Card Type Certification (eCB CTC)	Certifies that a specific card product has attained all the necessary pre-requisite approvals	<ul style="list-style-type: none"> eCB Card functional certification (eCB CFC) EMV CCD OR EMV Level 1 for contact AND Card security Evaluation 	<ul style="list-style-type: none"> eCB Card Type Certification procedure eCB Contact, Contactless and Dual interface PRIF ICS eCB Contact card image func requirements eCB Contactless card image func requirements eCB Card Security evaluation requirements¹ 	Card or Chip manufacturer or vendor
eftpos CB Card functional certification (eCB CFC)	Certifies that a specific card product complies with the eftpos ACe specifications.	N/A		
eftpos CB Contactless Card Type Certification (eCB CCTC)	Certifies that a contactless or dual interface card product has attained the necessary pre requisite approvals	<ul style="list-style-type: none"> EMV Level 1 Analog and Digital eCB CTC 	<ul style="list-style-type: none"> eCB Contactless card type certification procedure eCB CCTC PRIF 	Card or Chip manufacturer or vendor, or Personalisation Bureau
¹ The eCB Card Security requirements document is in draft				

Certification/process	Description	Pre-requisites approvals/certifications	Document bundle	Obtained by:
eftpos CB Card Personalisation Certification (eCB CPC)	Certifies the personalisation aspects of the eftpos Chip card product against the requirements defined in the eftpos ACe Specifications and Issuer Personalisation Manual.	Contact only card products <ul style="list-style-type: none"> • eftpos CB Card Type Certification (eCB CTC) Contactless or Dual interface card products <ul style="list-style-type: none"> • eftpos CB Contactless Card Type Certification (eCB CCTC) 	<ul style="list-style-type: none"> • eCB CPC procedure • eCB CPC PRIF ICS 	Issuer
Terminals				
eftpos CB Contactless Reader Functional Certification (eCB CRC)	Certifies that a specific Contactless reader product complies with the eftpos Chip Contactless reader specification.	Integrated reader² <ul style="list-style-type: none"> • EMVCo Level 1 Contactless approval • EMVCo Terminal Level 2 approval • PCI-PTS approval • APCA approval 	<ul style="list-style-type: none"> • eCB Contactless Reader Functional Certification procedure • eCB Contactless Reader PRIF ICS • eftpos CB Test cases 	Terminal/reader vendor
		Intelligent/transparent reader²: <ul style="list-style-type: none"> • EMVCo Level 1 Contactless approval 	<ul style="list-style-type: none"> • eCB Contactless Reader Functional Certification procedure • eCB Contactless Reader PRIF ICS • eftpos CB Test cases 	
eftpos CB Terminal Application Validation (eCB TAV and/or eCB CTAV)	Certifies that a specific terminal product (Contact terminal, dual interface terminal and contactless reader) complies with the eftpos Rules and Specifications.	Contact Terminal Application Validation: <ul style="list-style-type: none"> • EMVCo Terminal Level 2 • PCI-PTS approval • APCA approval 	Contact <ul style="list-style-type: none"> • eftpos CB TAV/CTAV procedure • eftpos CB TAV ICS and report • eftpos CB TAV User Manual • eftpos CB TAV Test cases 	Acquirer

Certification/process	Description	Pre-requisites approvals/certifications	Document bundle	Obtained by:
		Intelligent/transparent reader Contactless Terminal Application Validation: <ul style="list-style-type: none"> • eCB CRC 	Intelligent/transparent reader <ul style="list-style-type: none"> • eftpos CB TAV/CTAV procedure • eftpos CB CTAV ICS and report • eftpos CB CTAV User Manual • eftpos CB CTAV Test cases 	
		Integrated reader (Dual Interface) Contactless Terminal Application Validation: <ul style="list-style-type: none"> • eCB CRC 	integrated reader <ul style="list-style-type: none"> • eftpos CB TAV/CTAV procedure • eftpos CB TAV ICS and report • eftpos CB TAV User Manual • eftpos CB TAV Test cases • eftpos CB CTAV ICS and report • eftpos CB CTAV User Manual • eftpos CB CTAV Test cases 	
<p>²Integrated reader – The eftpos reader/kernel application is loaded into a device that is capable of communicating with the network and initiates a transaction by itself. The reader has a contact and contactless interface</p> <p>Intelligent reader – The eftpos reader/kernel application is loaded into a device which does not have the ability to communicate with the network. The intelligent reader performs the transaction and shall connect to an eftpos Chip contact terminal to communicate with the network</p> <p>Transparent reader - The eftpos reader/kernel application is loaded into a device which does not have the capability to communicate with the network. The transparent reader transmits the APDU commands/responses between the eftpos Chip contact terminal and the card while the terminal performs the transaction</p>				